

CLAYTON UTZ

McLean Edwards

The Clayton Utz Art Partnership



McLean Edwards

Artworks courtesy of McLean Edwards



McLean Edwards, born in Darwin, is a graduate of the Canberra School of Art. He has presented more than 30 solo exhibitions in a lauded career that has seen him awarded the Sulman Prize, and the Kings School Art Prize, in 2019. Edwards is also a five time finalist in the Archibald Prize at the Art Gallery of New South Wales. His work is collected widely by private institutions across Australia and features in many international and Australian private collections.

Edwards is an acclaimed artist celebrated for his distinctive and evocative portraiture. His paintings possess an enigmatic and surrealist intensity, and his ability to transcend traditional portraiture makes each of his paintings an exploration of character, emotion, and the unspoken connections between individuals and their environments.

Journalist Elizabeth Fortescue writes of Edwards' paintings:

"...if Edwards can go on his own flight of fancy when he paints (and the artist has said he leans a lot on his subconscious during the creative process), can we as viewers also cast off our conformist adult selves and even for a moment reconnect with our childhood daydreams? Can we become fellow travellers with the characters in the artists' canvases?

The answer is yes, we can. When we let go of the preoccupation with Edwards' paintings having to "mean" something, they blossom.

Whether Edwards' characters look hapless, befuddled, blank or shell-shocked, the artist once told me they are all self-aware. They know they are characters in a painting, and they are wondering how on earth they got there and what's going to happen to them next.

Regardless of their subject, however, Edwards' priority is to ensure a painting holds its own as a coherent work of art.

"That's got to be the priority – make sure it's a good painting," he said in 2006.

"And if there's any sort of political, anthropological or social concerns on top of that, all well and good. But the priority is to make a work that transcends itself."

Through his remarkable body of work, McLean Edwards has carved a unique niche in the Australian and global art communities, leaving a legacy that continues to resonate across generations. Whether through the surrealist intensity of his figures or the haunting beauty of his narratives, Edwards has established himself as a luminary in the world of art, ensuring his contributions endure as a source of inspiration and reflection."

The Clayton Utz Art Partnership brings together a unique collaboration between two outstanding Australian artists and our firm.

Each exhibition provides a platform to display the creations of two contemporary artists in a corporate office setting. This exhibition space delivers a distinctive visual art experience, allowing clients to closely engage with a diverse selection of artwork.

Our Sydney office is pleased to present an exploration of the evocative works of two of Australia’s most compelling contemporary figurative artists, McLean Edwards and Steve Lopes. Both artists place the human figure at the heart of their practice, using it as a powerful vehicle to delve into themes of identity, emotion, and the human condition. Edwards presents theatrical, surreal portraits that blend humour with psychological depth, while Lopes captures expressive figures within atmospheric landscapes. Despite their contrasting styles, both artists share a deep commitment to storytelling through painterly technique and personal symbolism.

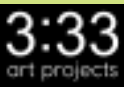
McLean Edwards’ work has earned him widespread recognition, including multiple finalist placements in the Archibald Prize and a win in the 2019 Sir John Sulman Prize, and his works are widely collected and held in several prominent public collections.

The Art Partnership is a truly exciting initiative and demonstrates our pride as an Australian firm committed to the cultural sector, and the broader creative communities in which we live and work.

We hope you enjoy being part of it.

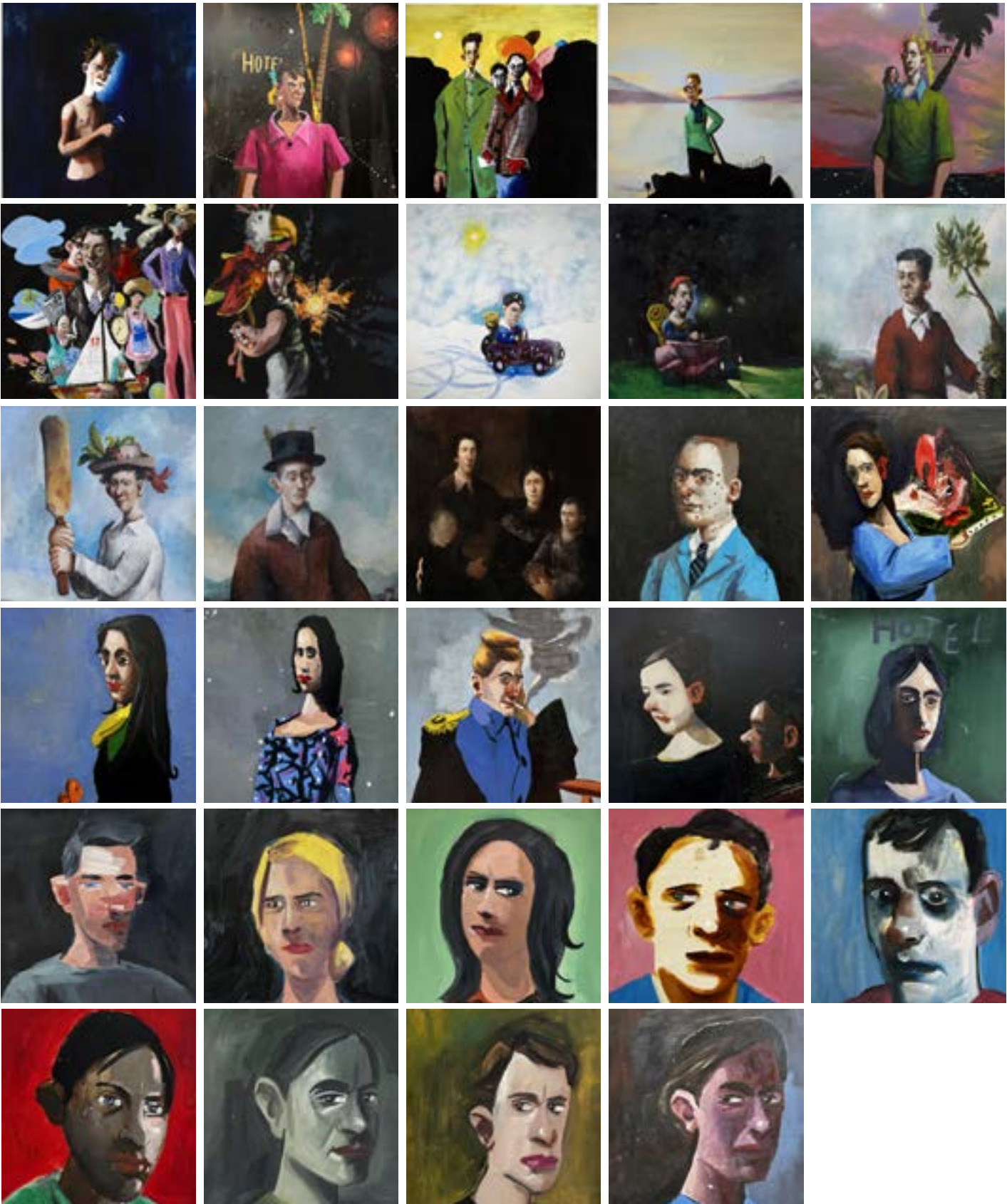
Development & Curatorial Partner
(For Enquiries)
info@333artprojects.com

Availability of artworks and prices subject to change



CLAYTON UTZ

Click each image to explore McLean Edwards work in our interactive guide.





Shaver, Self Portrait
2010
oil on canvas
183 x 183 cm
NFS



LA Story
2012
oil on canvas
213 x 183 cm
NFS



The Journalist
2012
oil on canvas
213 x 183 cm
NFS



LA Story #3 (Black List)
2012
oil on Linen
183 x 213 cm
NFS



LA Story #2
2012
oil on Linen
183 x 213 cm
NFS



Disco Boat
2010
oil on canvas
152 x 152 cm
NFS



Indiscrete
2007
oil on canvas
152 x 152 cm
NFS



Arctic Traveller
2009
oil on canvas
133 x 183 cm
NFS



Riding
2009
oil on canvas
153 x 153 cm
NFS



Portrait
1996
oil on canvas
140 x 91 cm
NFS



Bruises
1996
oil on canvas
121 x 81 cm
NFS



The Cricketer
1996
oil on canvas
102 x 76 cm
NFS



Ghost Family
1994
oil on canvas
122 x 102 cm
NFS



School Boy
2000
oil on canvas
70 x 60 cm
NFS



Untitled
2019
oil on linen
107 x 107 cm
\$10,000



Portrait of a girl with
Black Hair
2019
oil on canvas
120 x 100 cm
\$12,000



Untitled
2019
oil on canvas
102 x 102 cm
\$10,000



The Adelaide Writer
2020
oil on canvas
120 x 100 cm
\$12,000



Warwick in Limbo
2020
oil on canvas
112 x 87 cm
\$10,000



Untitled (Hotel)
2020
oil on linen
72 x 72 cm
\$5,500



Portrait of Peter in
French Paints
2020
oil on linen
61 x 61 cm
\$4,500



The Cellist
2017
oil on board
61 x 47 cm
\$2,800



The Paralegal
2017
oil on board
61 x 47 cm
\$2,800



The Instructor
2017
oil on board
51 x 41 cm
\$2,400



The Framer
2017
oil on board
51 x 41 cm
\$2,400



The Student #2
2017
oil on board
51 x 41 cm
\$2,400



The Actor #2
2017
oil on board
51 x 41 cm
\$2,400



The Waiter
2017
oil on board
51 x 41 cm
\$2,400



The Night Manager
2017
oil on board
51 x 41 cm
\$2,400

CLAYTON UTZ

