



Above  
*The Wannon Falls*  
2000  
oil on canvas  
183 x 135 cm



## JEFF MAKIN

Jeff Makin's art has long explored the picturesque and the sublime in nature, rooted in a specifically Australian locality. The You Yangs, the Grampians, Mt Buller, Flinders Ranges, Lake St Clair, Lake Eyre, Wannon Falls and the Yarra Valley are all locations that Makin has visited intermittently throughout his career, in search of capturing those intangible qualities that form the essence of the Australian landscape.

Jeff Makin has held over 70 solo exhibitions nationally and internationally and is recognised as one of Australia's leading landscape painters. A monograph, *Australia Felix: Landscapes by Jeffrey Makin*, was published by Macmillan in 2002. It begins with an introductory letter by friend and peer John Olsen, with essays by Professor Jenny Zimmer and art critic and historian Dr. Christopher Heathcote.

Highlights of his career include: successful solo exhibitions in London; art fairs in Chicago, Los Angeles, and Seoul; artist-in-residencies in Cheltenham England and Edinburgh University, Scotland. Makin has won numerous art prizes including the prestigious Tattersall's Club Landscape Prize, Brisbane. His art was also chosen to theme the first of the boutique Art Series Hotels, *The Makin*, in East Melbourne. Other public art projects would include large scale works in the Hilton International Hotel Brisbane; the VIP Lounge Sydney Airport; the World Trade Centre Sydney; and the Transporting Art project, Melbourne. Over the years Makin has also written extensively on art in newspapers and magazines, reviews and essays, and these were published by Macmillan as an anthology entitled *Critical Moments* in 2011.

Makin is represented in all public collections, and most corporate collections in Australia, and private collections here, the U.K. and the U.S.A.

The Clayton Utz Art Partnership brings together a unique collaboration between two outstanding Australian artists and our firm.

Each exhibition presents an opportunity to showcase the work of two contemporary artists in the offices of Clayton Utz. Our exhibition space offers a unique visual art experience for clients to get up-close and personal with an amazing array of artwork.

The paintings of Jeff Makin and Elizabeth Barnett embody the spirit of country Victoria. They live approximately twenty minutes away from each other in the north central goldfields region. Whilst traditional artists, each artist offers a distinct perspective of their locale. Makin, one of the last remaining heirs of the Heidelberg School, is a celebrated and established artist, painting plein air the landscapes of his home state. Barnett, in contrast, is a quickly rising young artist, who brings native botanicals into her Macedon Ranges studio, painting still life scenes from in situ arrangements incorporating books, ceramics and other intimate objects from her studio environment.

The uniquely curated program allows both artists to explore and display their work in one of Australia's leading corporate environments. Guests visiting the exhibition will have an opportunity to explore the artwork in an intimate and innovative environment. Complementing the exhibition the Art Partnership creates opportunities for both artists, Clayton Utz employees and our clients to collaborate and explore the creative process.

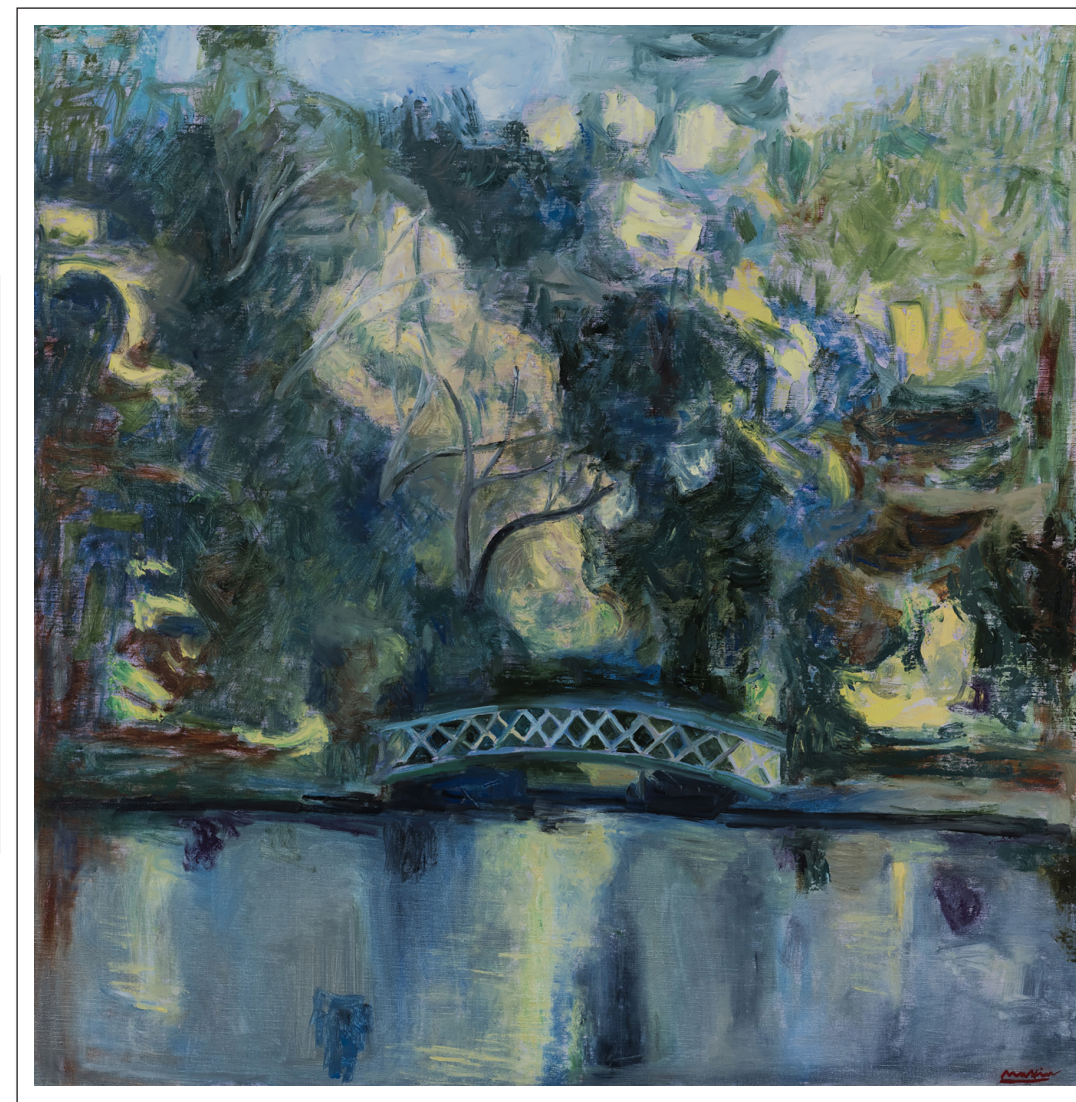
The Clayton Utz Art Partnership is a truly exciting initiative and demonstrates our pride as an Australian firm committed to the cultural sector, and the broader creative communities in which we live and work. We hope you enjoy being part of it.

Development & Curatorial Partner  
(For Enquiries)  
[info@333artprojects.com](mailto:info@333artprojects.com)



the  
**Uncommons**  
CLAYTON UTZ

Artworks courtesy of Jeff Makin  
Jeff Makin appears courtesy  
of James Makin Gallery



Above  
*Lake Daylesford, Winter*  
2018  
oil on linen  
92 x 92 cm

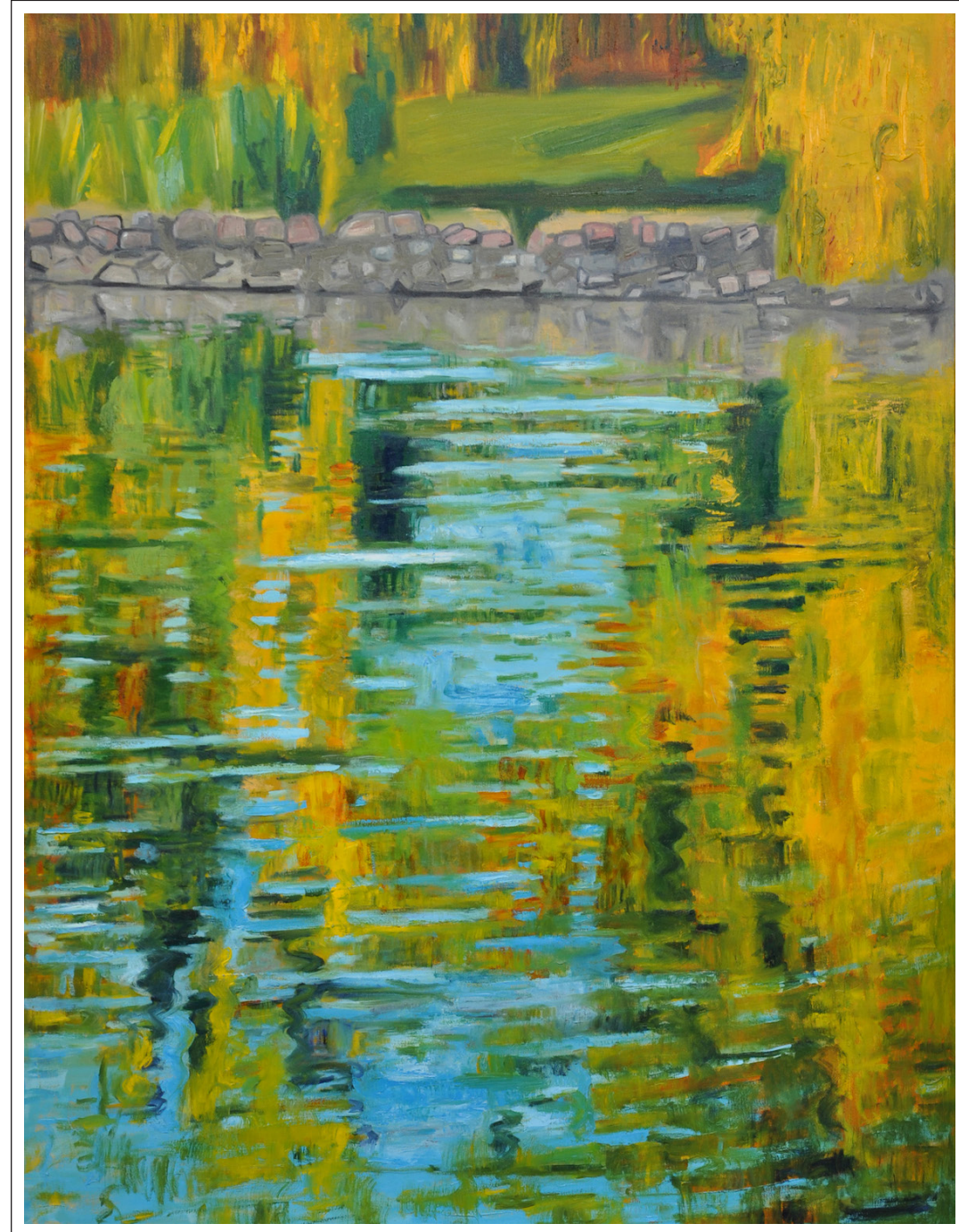




Above  
*Govetts Leap*  
2010  
oil on linen  
152 x 244 cm



Above  
*Lake Daylesford Footbridge - Autumn*  
2018  
oil on linen  
92 x 92 cm



Above  
*Lake Johanna*  
2015  
oil on linen  
152 x 122 cm